

FPL PHYSICAL DISTRIBUTION CENTER (PDC) NORTH

BEING A REPLAT OF ALL OF PLAT NO.1 EFC, ACCORDING TO THE PLAT THEREOF AS RECORDED IN PLAT BOOK 34, PAGE 116 & 117, TOGETHER WITH ALL OF PLAT NO.2 FLORIDA POWER & LIGHT COMPANY, ACCORDING TO THE PLAT THEREOF AS RECORDED IN PLAT BOOK 43, PAGE 32 & 33, TOGETHER WITH ALL OF FPL PLAT NO. 4, ACCORDING TO THE PLAT THEREOF AS RECORDED IN PLAT BOOK 80, PAGE 104, PUBLIC RECORDS OF PALM BEACH COUNTY, FLORIDA. SECTION 36, TOWNSHIP 42 SOUTH, RANGE 42 EAST, LYING IN THE CITY OF RIVIERA BEACH, PALM BEACH COUNTY, FLORIDA.

MATCH LINE SHEET 3 OF 5

154
SHEET 5 OF 5

MATCH LINE SHEET 4 OF 5

TRACT 1
PLAT NO. 1 EFC
(PLAT BOOK 34, PAGE 116 & 117)

SOUTH LINE OF TRACT 1 PLAT NO. 1 EFC
N88°04'53"W 1304.29'

NORTH LINE OF PLAT NO. 2
FLORIDA POWER & LIGHT COMPANY

SE CORNER OF TRACT 1
PLAT NO. 1 EFC

NE CORNER OF PLAT NO. 2
FLORIDA POWER & LIGHT COMPANY

PARCEL A
2,445,524 SQUARE FEET
56.142 ACRES
PLAT NO. 2 FLORIDA POWER &
LIGHT COMPANY
(PLAT BOOK 43, PAGE 32 & 33)

SOUTH LINE OF PLAT NO. 2
FLORIDA POWER & LIGHT COMPANY
LIMITS OF PLAT

SE CORNER OF PLAT NO. 2
FLORIDA POWER & LIGHT COMPANY

N87°56'33"W 1229.37'(TOTAL)

100' R/W
CANAL E.P.B. 10
N.P.B.C.W.C.D.
(ORB 816, PAGE 235)

LIMITS OF PLAT
S02°00'52"W 629.03'

LIMITS OF PLAT
EAST LINE OF SECTION 36
(BEARING BASIS)

LIMITS OF PLAT
S02°00'52"W 603.54'

S02°00'52"W 1607.09'(TOTAL)

10'x30' DITCH MAINTENANCE
ACCESS EASEMENT
(ORB 2816, PG 677)

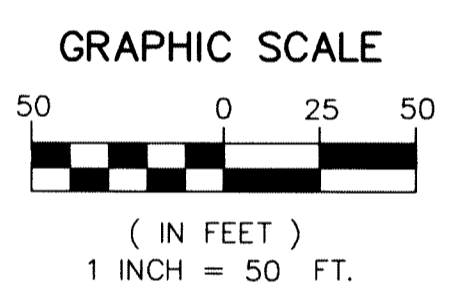
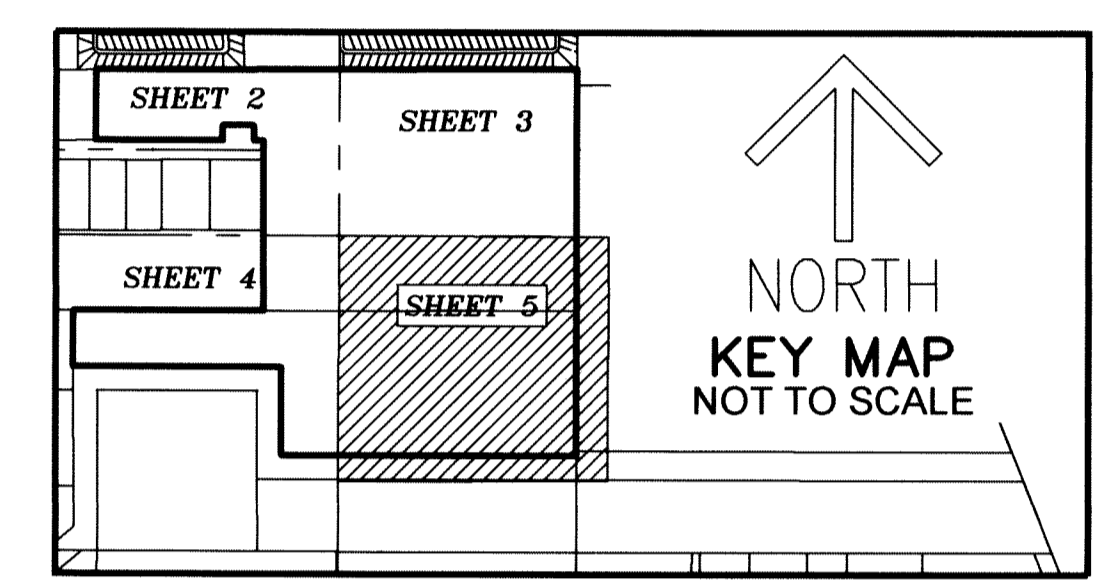
PARCEL "A"
PLAT NO. 1
FLORIDA POWER & LIGHT COMPANY
(PLAT BOOK 34, PAGE 171 & 172)

100' CANAL
EASEMENT
N.P.B.C.W.C.D.

100' CANAL
EASEMENT
N.P.B.C.W.C.D.

FND 4"x4"
CONC MON
NO IDENTIFICATION

FND 5/8"
NO ID



THIS INSTRUMENT PREPARED BY
RONNIE L. FURNISS
OF
CAULFIELD and WHEELER, INC.
SURVEYORS - ENGINEERS - PLANNERS
7900 GLADES ROAD, SUITE 100
BOCA RATON, FLORIDA 33434 - (561)392-1991
CERTIFICATE OF AUTHORIZATION NO. LB3591

LEGEND/ABBREVIATIONS

- BLVD - BOULEVARD
- CL - CENTERLINE
- CMC - CERTIFIED MUNICIPAL CLERK
- CONC - CONCRETE
- E.P.B. - EAST PALM BEACH
- FND - FOUND
- FPL - FLORIDA POWER AND LIGHT COMPANY
- ID - IDENTIFICATION
- IR - IRON ROD
- LB - LICENSED BUSINESS
- LS - LICENSED SURVEYOR
- MON - SURVEY MONUMENT
- NO. - DENOTES NUMBER
- N.P.B.C.W.C.D. - NORTHERN PALM BEACH COUNTY WATER CONTROL DISTRICT
- ORB - OFFICIAL RECORD BOOK
- PB - PLAT BOOK
- P.E. - PROFESSIONAL ENGINEER
- PG - PAGE OR PAGES
- POB - POINT OF BEGINNING
- PRM - PERMANENT REFERENCE MONUMENT
- RLS - REGISTERED LAND SURVEYOR
- R/W - RIGHT-OF-WAY
- UE - UTILITY EASEMENT
- PRM - INDICATES SET 4" X 4" X 24" CONCRETE PERMANENT REFERENCE MONUMENT WITH DISK STAMPED PRM LB3591
- - SET FOUND PERMANENT REFERENCE MONUMENT 4" X 4" CONCRETE MONUMENT
- - DENOTES FOUND PERMANENT REFERENCE MONUMENT AS NOTED
- ✱ - INDICATES SECTION CORNER